






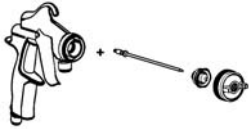
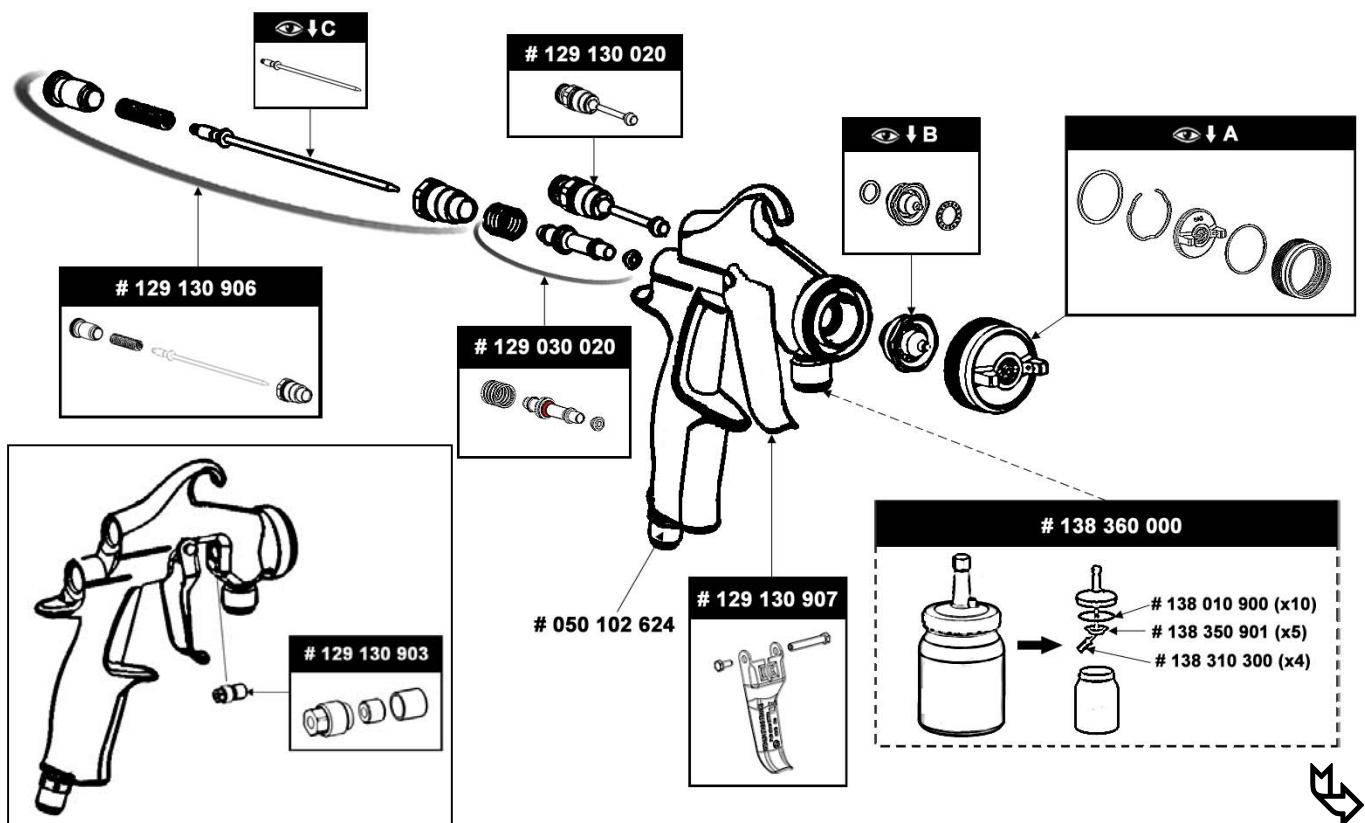


PIECES DE RECHANGE SPARE PARTS

M22 A & P BASIK

M 22 A BasiK			M 22 P BasiK		
					
		#			#
	-	136.147.200		-	135.147.200
	+ 15 BA 2	136.147.201		+ 09 BA 3	135.147.205
	+ 18 BA 2	136.147.202		+ 12 BA 3	135.147.206
				+ 15 BA 3	135.147.207
				+ 18 BA 3	135.147.208



Pochette de joints / Seal kit
129 130 901

** inclus dans la pochette de joints*
** included in the seal kit*

Pochette de maintenance / Servicing kit
129 140 902

		A		B		C	
	#		#		#		#
15 BA 2	031.147.001	BA 2	132.147.100	15	134.130.600	15 - 18	033.140.200
18 BA 2	031.147.002			18	134.130.700		
09 BA 3	031.147.005	BA 3	132.147.200	09	134.130.200	09 - 12	033.140.100
12 BA 3	031.147.006			12	134.130.300		
15 BA 3	031.147.007			15	134.130.600	15 - 18	033.140.200
18 BA 3	031.147.008			18	134.130.700		

049 030 042

906 300 101

Filtre arrivee produit
Fluid in-line filter
129 140 030

149 949 901 (x10)
151 399 902
n°6 (x10)

Mamomètre à la crosse
Handle gauge
150 070 560