



SERVICE MANUAL
PRESSURE POT
2 GALLON

Service Manual # LT 999-100-096
Released : March, 2010

EXEL North America, Inc.
45001 Five Mile Rd.
Plymouth, MI 48170
Ph: (800) 573-5554
Fx: (800) 664-1511
www.exel-na.com

EXEL North America Inc.
Canadian Branch
931 Progress Ave., #7
Scarborough ONT, M1G 3V5
Ph: (800) 450-0655
Fx: (416) 431-9171

Dear customer,

We thank you very much for purchasing our 2 Gallon Pressure Pot. You are the owner of an outstanding piece of equipment.

Please read and familiarize yourself with this instruction and service manual to get the best results and safest and most efficient operation of your equipment. Not following our recommendations outlined in this manual could reduce the life of the equipment, result in operating trouble and create unsafe conditions.

1. TECHNICAL FEATURES

- Maximum air pressure : 80 Psi
- Capacity : 2½ gallons
- Relief valve : 80 Psi
- Air inlet and outlet : ¼ NPS
- Air inlet with agitator : 3/8 NPT
- Fluid outlet : 3/8 NPS
- Material in contact with the product : Stainless Steel (Liner is aluminum)
- Weight : Standard/Agitated 28 lbs / 37lbs

2. ASSEMBLY INSTRUCTIONS

The 2 gallon pressure pot comes preassembled with a single air regulator for controlling the fluid pressure. As an option, a second air regulator can be added for controlling the atomization pressure to the gun.

Caution: Do not tighten cover more than finger tight. Excessive tightening with a wrench may damage gasket.

3. OPERATING INSTRUCTIONS

- 1 - Release air pressure in the tank before opening the pressure pot by turning the pressure release valve counter-clockwise until the pressure is fully released.
- 2 - Loosend the wing nuts, swing them away and remove cover.
- 3 - Mix the paint thoroughly and make sure it is the proper viscosity. Strain before pouring into container. Leave at least 2 inches from the top. It is important that the container should not be tipped or filled too full as this will cause paint to get into airline, regulator, or relief valve.
- 4 - Place cover back on the pot and tighten the four wing nuts.
- 5 - Connect air inlet to a clean filtered air supply.
- 6 - Connect gun atomization air to the outlet of the optional gun air regulator.
- 7 - Connect the fluid outlet to the gun fluid hose.
- 8 - Turn the pressure pot air regulator counter-clockwise to ensure the pot will start at zero pressure. Turn the air supply on and gradually increase fluid pressure to deliver the desired fluid delivery at the gun. Look for any leaking at the pot and fluid hose as pressure rises. If leaks are found release pressure and seal the leaks. Do not exceed 80 psi.
- 8a - Turn agitator needle valve counter-clockwise and gradually bring agitator up to speed. Do not over-agitate paint.
- 9 - Adjust gun air pressure via the optional gun air regulator to desired level.
- 10 - Operate the gun as per the instruction provided with the gun.

Paint may be sprayed directly from a one gallon container by placing can inside the tank, with paint tube in paint can. Place the lid onto the container and cross-tighten the 4 wing screws evenly until tight.

When work is stopped to refill or upon completion , turn regulators counter-clockwise to shut off flow to Paint Tank. Turn Compressor air off. Turn Pressure Relief Valve counter-clockwise to deplete air pressure to zero before loosening Wing Nuts. Keep the bottoms of Wing Nuts well greased so that Wing Nuts will screw down freely and paint will not adhere to threads.

Warning: Before Loosening wing nuts to remove cover, release air pressure from tank by turning relief valve counter clockwise.

4. CLEANING

- 1 – Turn air supply off by turning the pressure pot air regulator counter-clockwise until all pressure is released.
- 2 – Release air pressure in the pot by turning pressure relief valve counter-clockwise.
- 3 – Loosen all the wing nuts and remove cover.
- 4 – Drain the fluid line back into the pot.
- 5 – Empty the tank and clean with compatible cleaning solvent.
- 6 – Pour clean solvent into the tank.
- 7 – Place cover and tighten all screws
- 8 – Turn air on by gradually turning the pressure pot regulator clockwise until desired pressure is achieved.
- 9 – Spray into a waste container until clean solvent appears.

If spray nozzle clogs when you are starting a job and you know your paint is clean, check for dried paint and flaking from your paint hose. Remove paint hose and repeat cleaning procedure above or replace paint hose.

When there does not seem to be a good stream of air at the Spray Gun Nozzle, examine all connections to see that they are tight. Check pressure pot gasket for leakage and that it is seated firmly into the cover. Review the small air passage hole in underside of cover to make sure it is not obstructed but has a full clear opening.

5. SAFETY

WARNING: DO NOT USE OVER 80 LBS. PRESSURE IN PAINT TANK.

THIS CONTAINER IS EQUIPPED WITH A RELIEF VALVE AND SHOULD NEVER BE SUBJECTED TO AIR PRESSURES IN EXCESS OF 80 PSI. IT IS IMPORTANT THAT THE RELIEF VALVE BE KEPT CLEAN AND IN WORKING ORDER. IF PAINT COMES IN CONTACT WITH RELIEF VALVE, REMOVE RELIEF VALVE ASSEMBLY AND THOROUGHLY CLEAN IN PAINT SOLVENT OR REPLACE.

ALWAYS RELEASE PRESSURE BEFORE OPENING PRESSURE POT

6. TROUBLE SHOOTING CHART

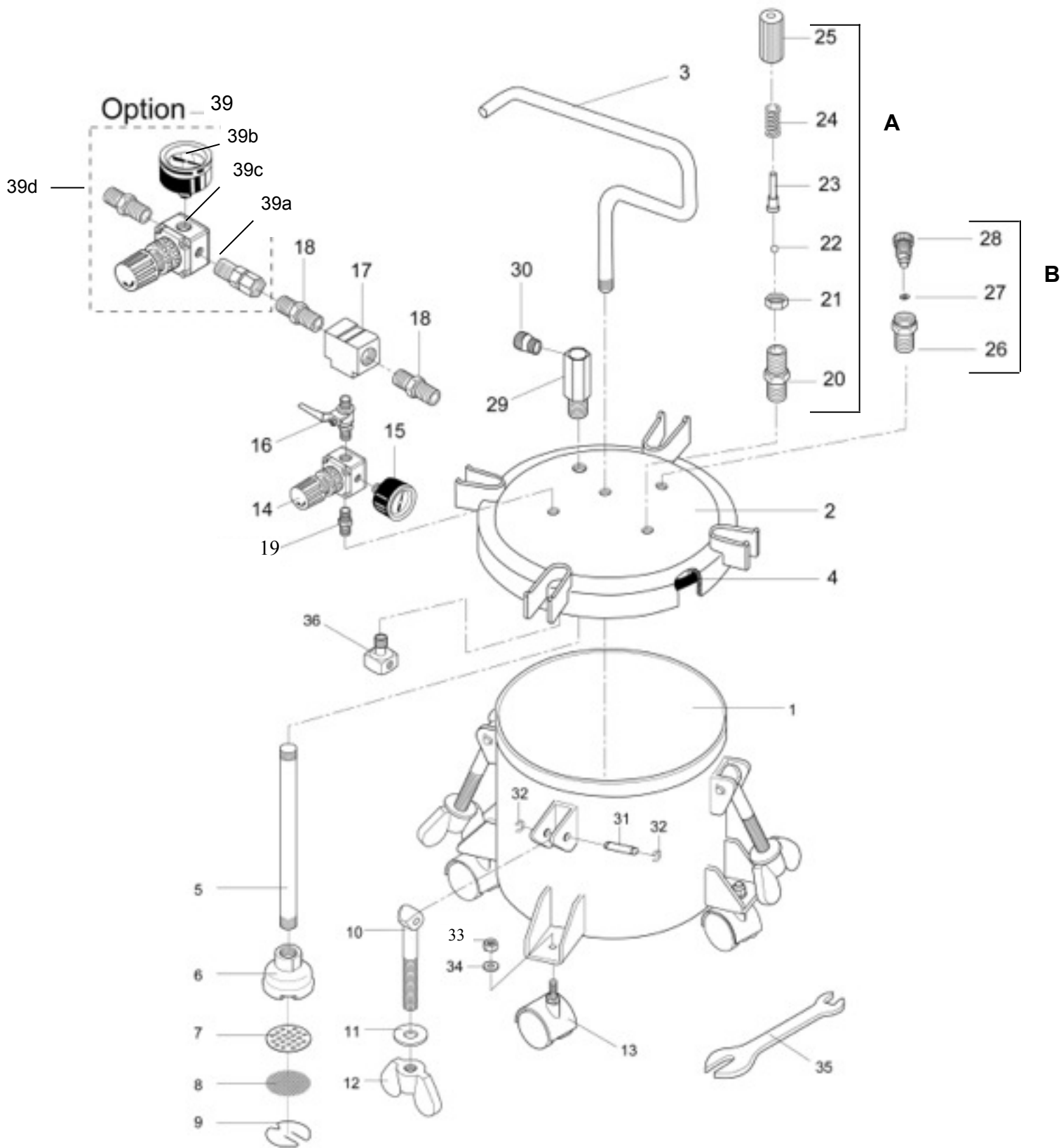
Problem	Cause	Remedy
Air pressure gauge is not reading pressure	Broken or Damaged	Replace
Material tends to settle out rapidly	Not enough agitation of material	Increase agitation
Fluid or air leak out from lid gasket	Defective lid gasket or wing nuts not tightened enough	Replace or tighten
Material does not come out smoothly	Filter or fluid tube may be blocked	Check and clean
Note : Check pressure gauge occasionally. The needle should drop to zero whenever there is no pressure in the tank.		

Parts identification list

PRESSURE POTS - 2 gallon

- with one air regulator **P.N°. 668-222-145**
- with one air regulator and agitation **P.N°. 668-222-155**
- with two air regulators **P.N°. 668-222-140**
- with two air regulators and agitation **P.N°. 668-222-150**

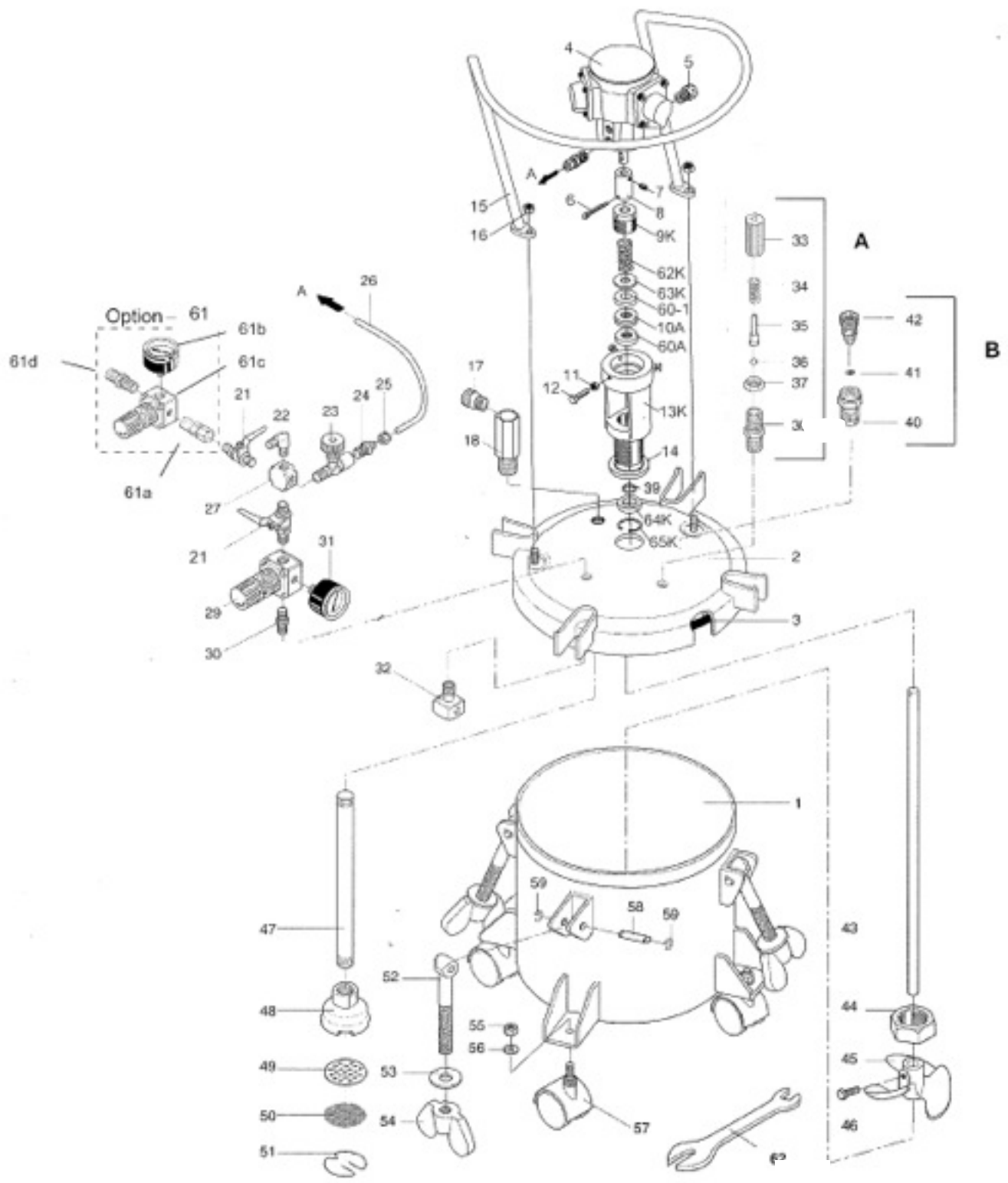




Index #	Part Number	Description	Quantity
1	668-222-005	Tank	1
1a	668-222-008	Pail, aluminum, 2 gallon tank	1
1b	668-222-009	Pail, s/s, 2 gallon tank*	1
1c	668-222-032	Liner, 2 gallon tank*, Pk of 10	1
2	668-222-006	Lid	1
3	668-222-007	Handle	1
4	668-222-031	Gasket	1
5	668-222-035	Fluid tube	1
6	668-222-036	Filter housing	1
7	668-222-037	Filter base	1
8	668-222-038	Filter screen	1
9	668-222-039	Snap ring	1
10	668-222-084	Swing bolt	4
11	668-222-085	Washer	4
12	668-222-086	Wing nut	4
13	668-222-081	Wheel, set of 4	4
14	668-222-033	Air regulator	1
15	668-222-029	Pressure gauge	1
16	668-222-027	Ball valve	1
17	668-222-028	Tee	1
18	668-222-026	Fitting	2
19	668-222-048	Fitting	1
A	668-222-047	Safety release valve	1
20	NSS	Adapter	1
21	NSS	Nut	1
22	NSS	Steel ball	1
23	NSS	Needle rod	1
24	NSS	Spring	1
25	NSS	Safety valve housing	1
B	668-222-054	Pressure release valve	1
26	NSS	Release valve	1
27	NSS	O-ring	1
28	NSS	Adapter	1
29	668-222-018	Material outlet adapter	1
30	668-222-019	Fitting	1
31	668-222-087	Roll pin, pk of 4	4

32	668-222-088	C-snap ring, pk of 8	8
33	668-222-082	Nut, 3/8 –16	4
34	668-222-083	Washer, lock, 3/8	4
35	668-222-089	Wrench	1
36	668-222-017	Air flow guide	1
39	668-222-034	Regulator assembly*	1
39a	668-222-049	Swivel fitting	1
39b	668-222-029	Pressure gauge	1
39c	668-222-033	Air regulator	1
39d	668-222-026	Fitting	1

*Optional



Index #	Part Number	Description	Quantity
1	668-222-005	Material tank	1
1a	668-222-008	Pail, aluminum, 2 gallon tank	1
1b	668-222-009	Pail, s/s, 2 gallon tank*	1
1c	668-222-032	Liner, 2 gallon tank*, Pk of 10	1
2	668-222-016	Lid	1
3	668-222-031	Gasket	1
4	668-222-060	Air motor	1
5	668-222-061	Muffler	1
6	668-222-062	Cotter pin	1
7	668-222-063	Set screw	1
8	668-222-064	Connecting bush	1
9K	668-222-112	Retaining Guide	1
10A	668-222-098	Seal Ring	3
11	668-222-067	Hex nut	1
12	668-222-068	Screw bolt	1
13K	668-222-115	Motor Base	1
14	668-222-070	Seal ring	1
15	668-222-075	Handle	1
16	668-222-076	Hex nut	2
17	668-222-019	Fitting, 3/8 NPS	1
18	668-222-018	Material outlet adapter	1
21	668-222-027	Ball valve	2
22	668-222-109	Elbow (Air inlet) fitting, 3/8 NPT	1
23	668-222-091	Valve, Needle	1
24	668-222-092	Adapter	1
25	668-222-093	Nut	1
26	668-222-094	Air hose	1
27	668-222-108	Cross	1
29	668-222-033	Pressure regulator	1
30	668-222-048	Fitting, 1/4	1
31	668-222-029	Pressure gauge	1
32	668-222-017	Air flow guide	1
A	668-222-047	Safety release valve	1
33	NSS	Safety valve shell	1
34	NSS	Spring	1

35	NSS	Needle rod	1
36	NSS	Steel ball	1
37	NSS	Nut	1
38	NSS	Adapter	1
39	668-222-099	O-ring	2
B	668-222-054	Pressure release valve	1
40	NSS	Adapter	1
41	NSS	O-ring	1
42	NSS	Needle Pressure release	1
43	668-222-071	Agitator rod	1
44	668-222-072	Hex nut	1
45	668-222-073	Agitator propeller	1
46	668-222-074	Screw bolt	1
47	668-222-035	Fluid tube	1
48	668-222-036	Filter housing	1
49	668-222-037	Filter base	1
50	668-222-038	Material filter	1
51	668-222-039	Snap ring	1
52	668-222-084	Swing bolt	4
53	668-222-085	Washer	4
54	668-222-086	Wing nut	4
55	668-222-082	Hex nut, 3/8 -16	4
56	668-222-083	Washer, lock, 3/8	4
57	668-222-081	Wheel, set of 4	4
58	668-222-087	Roll pin, pk of 4	4
59	668-222-088	C-Snap ring, pack of 8	8
60	668-222-098	Seal ring (Newer Version)	1
60-1	668-222-102	Seal Ring (Newer Version)	1
60A	668-222-104	Seal Ring (Newer Version)	1
61	668-222-034	Regulator assembly*	1
61a	668-222-049	Swivel fitting, 1/4	1
61b	668-222-029	Pressure gauge	1
61c	R72G-2GK-RMN	Air regulator	1
61d	668-222-026	Fitting, 1/4	1
62	668-222-089	Wrench	1
62K	668-222-113	Spring	1
63K	668-222-114	Seal	1

64K	668-222-110	Seal	1
65K	668-222-111	Circlip	1

*Optional

Note: For parts list on pre-2010 models, ask your Kremlin representative for the October 2005 release of manual LT 999-100-096